

Leading the Charge

Mina Energy is another company with a unique approach to fleet electrification. It is joining forces with The Algorithm People to help fleets accelerate the switch to EVs.

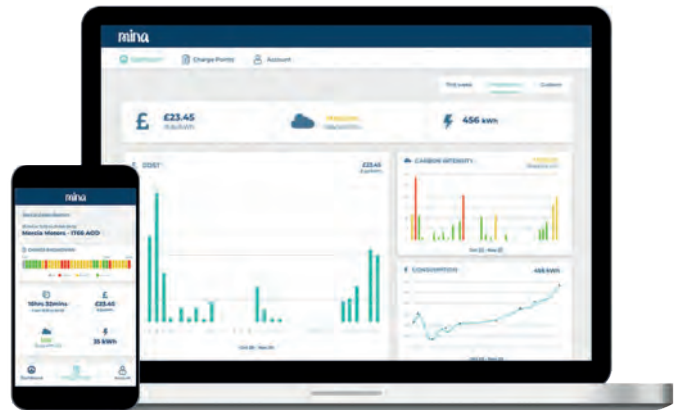
While The Algorithm People can play a key role in helping fleets adopt electric vehicles (EVs), there are other challenges that optimisation can't overcome. "We recognise that we don't have all the answers," said Colin Ferguson, CEO of The Algorithm People. "If we can't solve your problem ourselves, we will recommend one of our trusted partners who can."

One of the latest companies to join its partner network is Mina Energy. The Sheffield-based business helps encourage fleet adoption and management of electric vehicles (EVs) with its innovative EV charging platform. Mina's software integrates with charge points installed at employees' homes, as well as the homeowner's energy supplier, to manage payment of energy used by an EV. A web portal enables drivers to split business and private mileage, which ensures that employers only reimburse drivers for business mileage. It also ensures that employees do not end up paying for work trips as part of their domestic energy bill.

Mina is working with leading facilities management and professional services company Mitie, which already has more than 500 EVs. As part of its Plan Zero pledge, Mitie has committed to reach net zero carbon emissions by 2025, including turning its entire fleet of 5,500 vehicles electric. While its EV rollout is on track, one of the challenges Mitie has faced was how to easily pay for employees' home charging. Mitie is now using Mina's revolutionary EV 'fuel card' system within its EV fleet.

Ferguson added: "We were delighted to sign up Mina Energy to our partner network. The UK has ambitious targets for electric vehicle adoption, but barriers still exist for businesses to adopt EVs. Innovative solutions from companies like Mina help to remove those barriers and will accelerate fleet electrification."

The companies are already working closely to make adopting and managing EVs even easier for fleet operators. Chris Dalrymple, co-founder and director of Mina, said: "By



partnering with The Algorithm People we can create an even more compelling proposition for fleet operators. Together we can offer a fresh perspective on the entire process, from identifying the right vehicles to electrify, and optimising their use; to simplifying EV charging, energy billing and employee expenses."

Mina enables employees to charge their electric cars and vans at home, then easily claim the costs back from employers. Fleet managers get one single invoice for the energy used and have complete visibility via Mina's fleet dashboard. By encouraging home charging, fleet operators also benefit from lower energy costs compared to the prices at public charge points. Furthermore, Mina streamlines the expenses claim process and can extend the solution to cover public and workplace charging.

Ashley Tate, co-founder of Mina Energy said: "Going electric doesn't have to be complicated or expensive. With our unique home charging solution, drivers are able to charge their vehicles at the home with no cost or impact on their household electricity bill."

EV Energy Made Easy

Mina Energy makes it easy for employees to charge their company cars and vans at home.

- Mina's software integrates with charge points installed at employees' homes
- It also links to the homeowner's energy supplier
- Drivers can access a web portal to split their business and private mileage
- This ensures that they don't end up paying for work travel
- Fleet managers have complete oversight of all energy use
- Mina also streamlines the expenses claims process
- Home charging saves companies money compared to using public charging posts



Chris Dalrymple and Ashley Tate of Mina Energy